
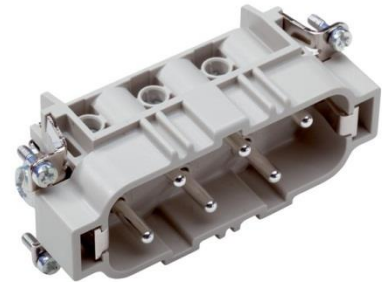


10170600	<b>DATA SHEET</b>	
Valid from: 16.10.2023	<b>EPIC® H-BS 12 SS / H-BS 12 BS DR</b>	

## Description

- Inserts for high currents.
- High rating for currents up to 35 A
- Screw termination up to a conductor cross section of 6 mm<sup>2</sup>
- Two H-BS 6 inserts with different contact-numbering for one housing.
- UL tested for control cabinet applications with high SCCR ratings in accordance with UL 508 / UL 2237.



## General Characteristics

Series	H-BS 6
Version	Male: 10170600; Female: 10171600
Wire protection	Yes
Number of Contacts	12 + PE
Contacts	7-12
Termination Methods	Screw termination: 0.5 - 6 mm <sup>2</sup>
Temperature Range	-40°C to +100°C, short-term up to +125°C

## Mechanical Characteristics

Cycle of mechanical operation	100
-------------------------------	-----

## Electrical Characteristics

Rated Voltage, IEC	500 V
Rated Voltage, UL	600 V
Rated Voltage, CSA	600 V
Voltage Conductor-Conductor/Conductor-PE	690 V / 400V
Rated Impulse Voltage	6 kV
Rated Current, IEC	35 A
Rated Current, UL	35 A
Rated Current, CSA	35 A
Contact Resistance	< 2 mOhm
Degree of Soiling	3
SCCR	See <a href="#">PVVA2:E483837</a>


## Materials and Surfaces

Contacts	Copper alloy, hard silver-plated
Insulating Body	PC
Flammability Class according to UL 94	V0

## Approvals

UL-Approval, E-File-Number	E75770, E483837
VDE-tested, VDE-REG. no.	B437

Creator: THBO1/PDP Released: IVSE1/PDP	Document: DB10170600EN Version: 04	Page 1 of 2
---	---------------------------------------	-------------

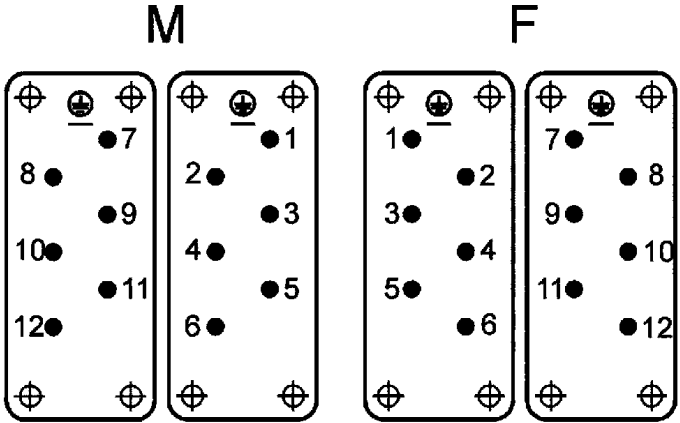
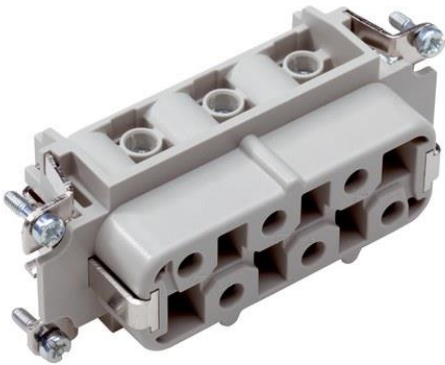
10170600	<b>DATA SHEET</b>	
Valid from: 16.10.2023	<b>EPIC® H-BS 12 SS / H-BS 12 BS DR</b>	

**Standard**

Safety/Application Standard

IEC 61984, UL 1977, UL2237, CSA 22.2 182.3

**Technical Drawing**



Industrial machinery and plant engineering



Robust



Temperature-resistant

**Info**

Standard insert for currents up to 35A

**Application range**

- Plant engineering
- Mechanical engineering
- Drive systems

**Remark**

Photographs are not to scale and do not represent detailed images of the respective products.

Creator: THBO1/PDP Released: IVSE1/PDP	Document: DB10170600EN Version: 04	Page 2 of 2
---	---------------------------------------	-------------