

53113800	DATA SHEET	
Valid from: 31.03.2026	SKINTOP® TRAIN / TRAIN XL	

The SKINTOP® SKINTOP® TRAIN / SKINTOP® TRAIN XL is a metric cable gland made of brass nickel-plated with a elastomer seal which is flame retardant and halogen free. The XL-Version with an extra-long thread. It is designed for a universal use, in premises where the subject is human protection, such as office and public buildings, rail vehicles, undergrounds tunnels, aeration systems, as well as in premises where the subject is protection of properties values, such as industrial installations, storehouses, supply installations and ship building.



Components:

Gland Body	Brass, nickel plated
Cap nut	Brass, nickel plated
Seal	Special Elastomer Halogen free, flame retardant
O-Ring:	Special Elastomer Halogen free, flame retardant

Technical features:

Connecting thread TRAIN	M 12x1,5 up to M 63x1,5 in acc. to DIN 60423
Connecting thread TRAIN XL	M 12x1,5 up to M 50x1,5 in acc. to DIN 60423
IP- protection	IP 68 - 3 bar/30min in acc. to EN 60529
Strain relief	cat. A in acc. to DIN EN 62444
Temperature range	Dynamic -20°C up to +100°C Static -40°C up to +100°C



Norm references:

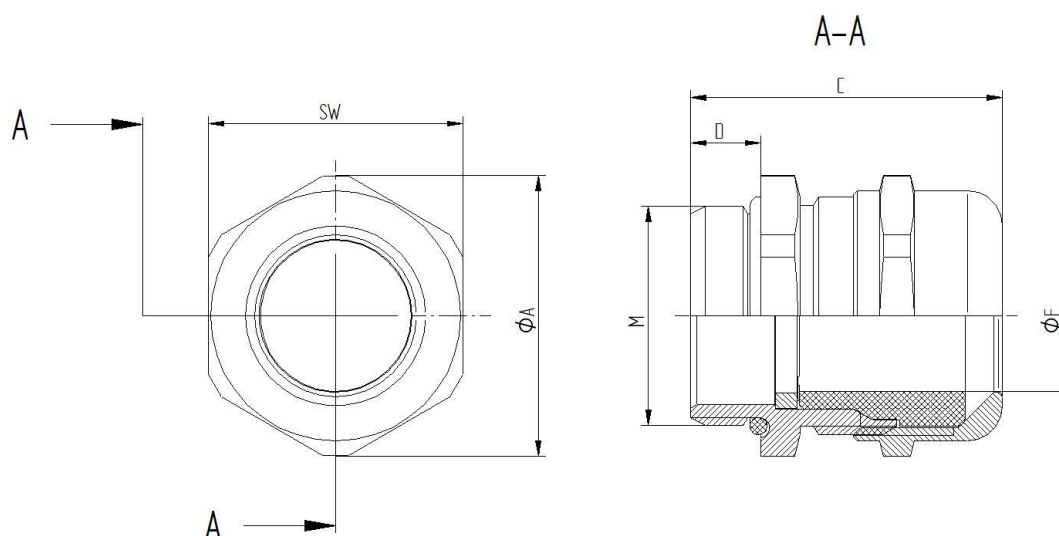
Tested in according to:

DIN EN 45545-2: 2023-11
 “Railway applications – Fire protection to railway vehicles – Part 2: Requirements for fire behavior of materials and components.“
 Test result: Hazard Level **HL3** acc. to DIN EN ISO 5659-2: 2017-11

DIN EN 45545-3: 2024-05
 „Railway applications – Fire protection to railway vehicles – Part 3: Fire resistance requirements for fire barriers.“
 Classification: **E30** acc. to DIN EN 13501-2: 2016-12

Creator: THSC6 / PDP Released: DAMU1 / PDP	Document: DB53113800EN Version: 04	Page 1 of 2
---	---------------------------------------	-------------

53113800	DATA SHEET	
Valid from: 31.03.2026	SKINTOP® TRAIN / TRAIN XL	



SKINTOP® TRAIN

Thread	SW	ØA	C max.	D	Clamping range ØF	O-Ring	PartNo.
M12x1,5	16	17,6	25,5	6,5	3,5 – 6,5	9x2	53113800
M16x1,5	20	22	30	7	6,0 – 9,5	13x2	53113801
M20x1,5	24	26,4	33	8	8,0 – 12,0	17x2	53113802
M25x1,5	29	31,9	35	8	12,0 – 16,0	22x2	53113803
M32x1,5	36	39,6	41,5	9	13,0 – 20,0	28x2	53113804
M40x1,5	45	49,5	47	9	19,0 – 27,0	36x2	53113805
M50x1,5	54	59	52	10	27,0 – 34,0	46x2	53113806
M63x1,5	67	73,5	60	15	34,0 – 44,0	57x2	53113807

SKINTOP® TRAIN XL

Thread	SW	ØA	C max.	D	Clamping range ØF	O-Ring	PartNo.
M12x1,5	16	17,6	32	12	3,5 – 6,5	9x2	53113810
M16x1,5	20	22	38	12	6,0 – 9,5	13x2	53113811
M20x1,5	24	26,4	41	12	8,0 – 12,0	17x2	53113812
M25x1,5	29	31,9	42,5	12	12,0 – 16,0	22x2	53113813
M32x1,5	36	39,6	51,5	15	13,0 – 20,0	28x2	53113814
M40x1,5	45	49,5	54	15	19,0 – 27,0	36x2	53113815
M50x1,5	54	59	60,5	15	27,0 – 34,0	46x2	53113816

For more information, please see our current catalogue. Please do not hesitate to contact our laboratory if there are any questions regarding resistance against aggressive agents and special oil.

Creator: THSC6 / PDP Released: DAMU1 / PDP	Document: DB53113800EN Version: 04	Page 2 of 2
---	---------------------------------------	-------------