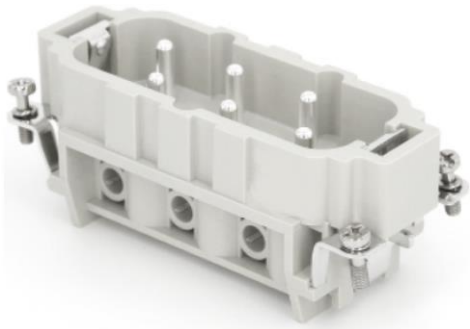


381166845	<b>DATA SHEET</b>	
Valid from: 17.06.2025	<b>EPIC® H-BS 006 MS</b>	

Description

- Inserts for high currents.
- High rating for currents up to 35 A
- Screw termination up to a conductor cross section of 6 mm²



Images may vary

General Characteristics

Series	H-BS 6
Version	Male
Design Size	16B
Number of Contacts	6 + PE
Wire Protection	No
Termination Methods	Screw termination: 1.5 – 6 mm²/AWG 16-10
Temperature Range	-40°C up to +125°C

Mechanical Characteristics

Cycle of mechanical operation	≥ 500
-------------------------------	-------

Electrical Characteristics

Rated voltage conductor-earth, IEC	400 V
Rated voltage conductor-conductor; IEC	690 V
Rated voltage, UL/CSA	600 V
Rated Impulse Voltage	6 kV
Rated Current, IEC	35 A
Contact Resistance	≤ 1 mΩ
Pollution degree	3

Materials and Surfaces

Contacts	Copper alloy, hard-silver plated
Insulating Body	PC
Flammability Class according to UL 94	V-0

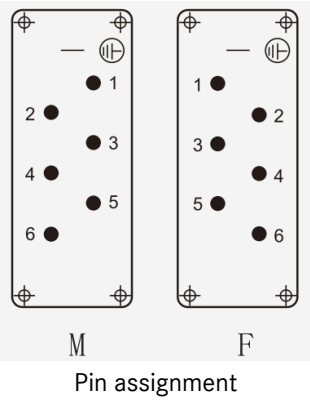
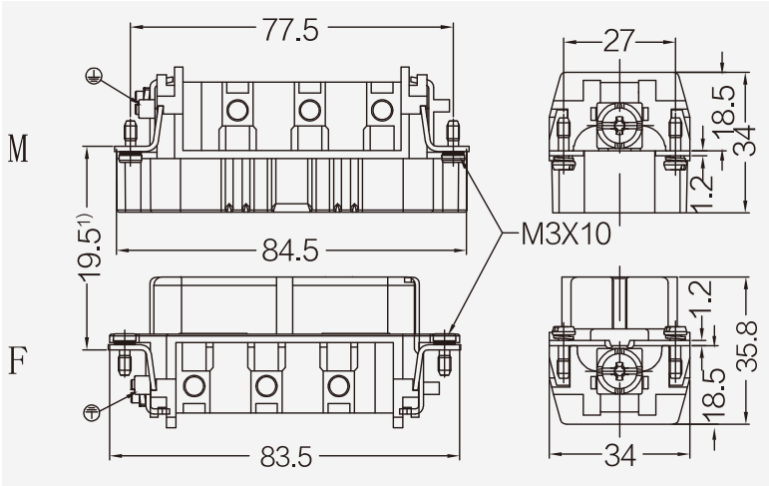
Standard

Safety Standard	IEC 61984, IEC 60664-1
-----------------	------------------------

Creator: TODV1/BU EPIC Released: THBO1/BU EPIC	Document: DB381166845EN Version: 01	Page 1 of 3
---	--	-------------

381166845	<b>DATA SHEET</b>	
Valid from: 17.06.2025	<b>EPIC® H-BS 006 MS</b>	

Technical Drawings



381166845	<b>DATA SHEET</b>	
Valid from: 17.06.2025	<b>EPIC® H-BS 006 MS</b>	



Industrial machinery and plant engineering



Robust



Temperature-resistant

### Info

Standard insert for currents up to 35A

### Application range

Plant engineering  
Mechanical engineering  
Drive systems

### Remark

Photographs are not to scale and do not represent detailed images of the respective products.

Creator: TODV1/BU EPIC Released: THBO1/BU EPIC	Document: DB381166845EN Version: 01	Page 3 of 3
---	--	-------------