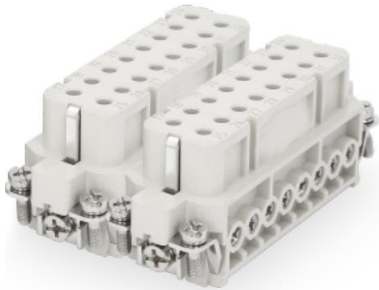


381167232	<b>DATA SHEET</b>	
Valid from: 06.06.2025	<b>EPIC® H-A 016 FS 17-32</b>	

Description

- H-A inserts with screw termination up to 2.5 mm² wire cross section.
- Slim connector insert for standard application.
- Easy to service screw connection.
- Universal for current and voltage transmission.



Images may vary

General Characteristics

Series	H-A 16 (Contact identification 17-32)
Details	Two inserts for a complete assembly needed
Version	Female
Design Size	32A
Number of Contacts	16 + PE (Contact identification 17-32)
Wire Protection	Yes
Termination Methods	Screw termination: 1.0–2.5 mm²/AWG 18-14
Temperature Range	–40°C up to +125°C

Mechanical Characteristics

Cycle of mechanical operation	≥ 500
Tightening torque contact screw	0.5 Nm


Electrical Characteristics

Rated Voltage, IEC	250 V
Rated Voltage, UL	600 V
Rated Voltage, CSA	600 V
Rated Impulse Voltage	4 kV
Rated Current, IEC	16 A
Rated Current, UL	16 A
Rated Current, CSA	16 A
Contact Resistance	≤ 1 mΩ
Pollution degree	3

Materials and Surfaces

Contacts	Copper alloy, hard-silver plated
Insulating Body	PC
Flammability Class according to UL 94	V-0

Creator: TODV1/BU EPIC Released: THBO1/BU EPIC	Document: DB381167232EN Version: 01	Page 1 of 3
---	--	-------------

381167232	<b>DATA SHEET</b>	
Valid from: 06.06.2025	<b>EPIC® H-A 016 FS 17-32</b>	

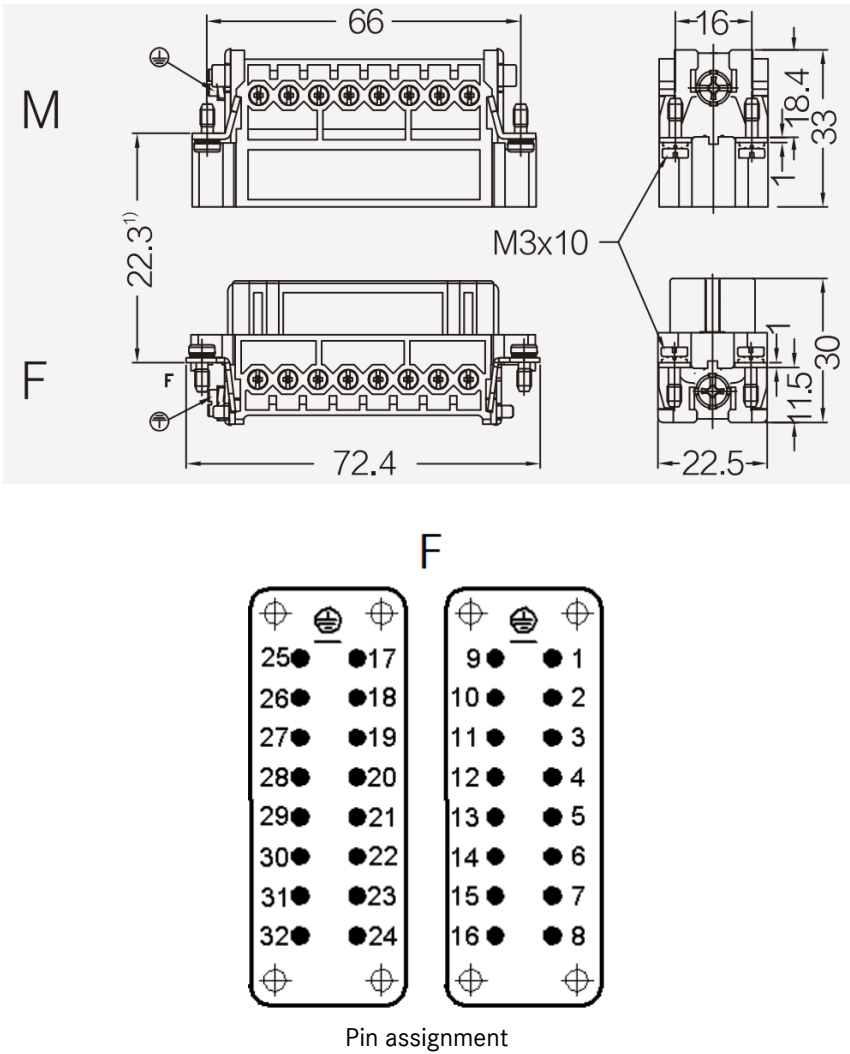
Certifications

UL- Certification, E-File-Number E75770

Standard

Safety Standard IEC 61984, IEC 60664-1  
UL 1977  
CSA 22.2 182.3

Technical Drawings



381167232	<b>DATA SHEET</b>	
Valid from: 06.06.2025	<b>EPIC® H-A 016 FS 17-32</b>	



Industrial machinery and plant engineering



Assembly time



Space Requirement

### Info

Slim standard insert, easy to connect by screw

Universal for current and voltage transmission

### Application range

Machine and equipment manufacturings

Control engineering

### Remark

Photographs are not to scale and do not represent detailed images of the respective products.

Creator: TODV1/BU EPIC Released: THBO1/BU EPIC	Document: DB381167232EN Version: 01	Page 3 of 3
---	--	-------------