


53113840	DATA SHEET	
Valid from: 10.04.2026	SKINTOP® TRAIN EMC (XL)	

The SKINTOP® TRAIN EMC (XL) is a metric cable gland made of brass nickel-plated with a elastomer seal which is flame retardant and halogen free. It is designed for a universal use, in premises where the subject is human protection, such as office and public buildings, rail vehicles, undergrounds tunnels, aeration systems, as well as in premises where the subject is protection of properties values, such as industrial installations, storehouses, supply installations and ship building.



Components:

Gland Body	Brass, nickel plated
Cap nut	Brass, nickel plated
Seal	Special Elastomer Halogen free, flame retardant
Contact brush	Brass wire
O-Ring:	Special Elastomer Halogen free, flame retardant

Technical features:


Connecting thread EMC	M 16x1,5 up to M 63x1,5 in acc. to DIN 60423, table 1
Connecting thread EMC XL	M 16x1,5 up to M 50x1,5 in acc. to DIN 60423, table 1
IP- protection	IP 68 - 3 bar/30min in acc. to EN 60529
Strain relief	cat. A in acc. to DIN EN 62444
Temperature range	Dynamic -20°C up to +100°C Static -40°C up to +100°C
Transfer impedance	≤ 10 mOhm

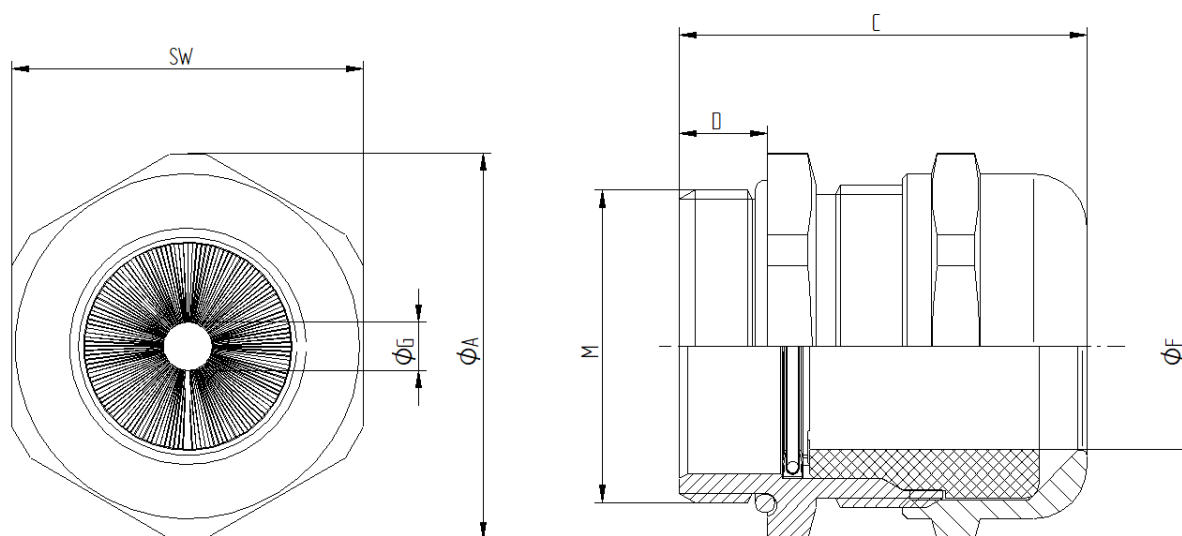


Norm references:

Tested in according to:	DIN EN 45545-2: 2023-11 “Railway applications – Fire protection to railway vehicles – Part 2: Requirements for fire behavior of materials and components.“ Test result: Hazard Level HL3 acc. to DIN EN ISO 5659-2: 2017-11
	DIN EN 45545-3: 2024-05 „Railway applications – Fire protection to railway vehicles – Part 3: Fire resistance requirements for fire barriers.“ Classification: E30 acc. to DIN EN 13501-2: 2016-12

Creator: STKU3 Released: DAMU1	Document: DB53113840EN Version: 01	Page 1 of 2
-----------------------------------	---------------------------------------	-------------

53113840	DATA SHEET	
Valid from: 10.04.2026	SKINTOP® TRAIN EMC (XL)	



Thread	SW (mm)	ØA (mm)	C max. (mm)	D (mm)	Clamping range ØF (mm)	ØG over braiding (mm)	O-Ring	Part No.
M16x1,5	20	22,0	30	7	6,0 - 9,5	2-6	13x2	53113840
M20x1,5	24	26,4	33	8	8,0 - 12,0	3-9	17x2	53113841
M25x1,5	29	31,9	35	8	12,0 - 16,0	6-13,5	22x2	53113842
M32x1,5	36	39,6	41,5	9	13,0 - 20,0	8-18	28x2	53113843
M40x1,5	45	49,5	47	9	19,0 - 27,0	10-26	36x2	53113844
M50x1,5	54	59,0	52	10	27,0 - 34,0	14-33	46x2	53113845
M63x1,5	67	73,5	60	15	34,0 - 44,0	20-40	57x2	53113846

SKINTOP® TRAIN EMC XL

Thread	SW (mm)	ØA (mm)	C max. (mm)	D (mm)	Clamping range ØF (mm)	ØG over braiding (mm)	O-Ring	Part No.
M16x1,5	20	22,0	38	12	6,0 - 9,5	2-6	13x2	53113850
M20x1,5	24	26,4	41	12	8,0 - 12,0	3-9	17x2	53113851
M25x1,5	29	31,9	42,5	12	12,0 - 16,0	6-13,5	22x2	53113852
M32x1,5	36	39,6	51,5	15	13,0 - 20,0	8-18	28x2	53113853
M40x1,5	45	49,5	54	15	19,0 - 27,0	10-26	36x2	53113854
M50x1,5	54	59,0	60,5	15	27,0 - 34,0	14-33	46x2	53113855

For more information, please see our current catalogue. Please do not hesitate to contact our laboratory if there are any questions regarding resistance against aggressive agents and special oil.

Creator: STKU3 Released: DAMU1	Document: DB53113840EN Version: 01	Page 2 of 2
-----------------------------------	---------------------------------------	-------------