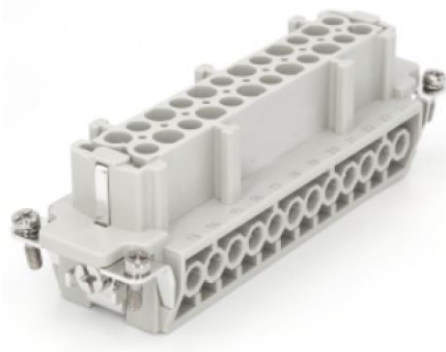


381166832	DATA SHEET	
Valid from: 31.07.2025	EPIC® H-BE 024 FS	

Description

- The EPIC® H-BE series is suitable for applications that require a reliable connection when working with high voltages and currents
- Standard insert with screw termination



Images may vary

General Characteristics

Series	H-BE 24
Version	Female
Design Size	24B
Number of Contacts	24 + PE
Wire Protection	Yes
Termination Methods	Screw termination: 0.75–2.5 mm²/AWG 18-14
Temperature Range	-40°C up to +125°C

Mechanical Characteristics

Cycle of mechanical operation	≥ 500
Tightening torque contact screw	0.5 Nm
Stripping length	7 mm

Electrical Characteristics

Rated Voltage, IEC	500 V
Rated Voltage, UL & CSA	600 V
Rated Impulse Voltage	6 kV
Rated Current, IEC	16 A
Rated Current, UL & CSA	16 A
Contact Resistance	≤ 1 mΩ
Pollution degree	3

Materials and Surfaces

Contacts	Copper alloy, hard-silver plated
Insulating Body	PC
Flammability Class according to UL 94	V-0

Creator: TODV1/BU EPIC Released: THBO1/BU EPIC	Document: DB381166832EN Version: 01	Page 1 of 3
---	--	-------------

381166832	DATA SHEET	
Valid from: 31.07.2025	EPIC® H-BE 024 FS	

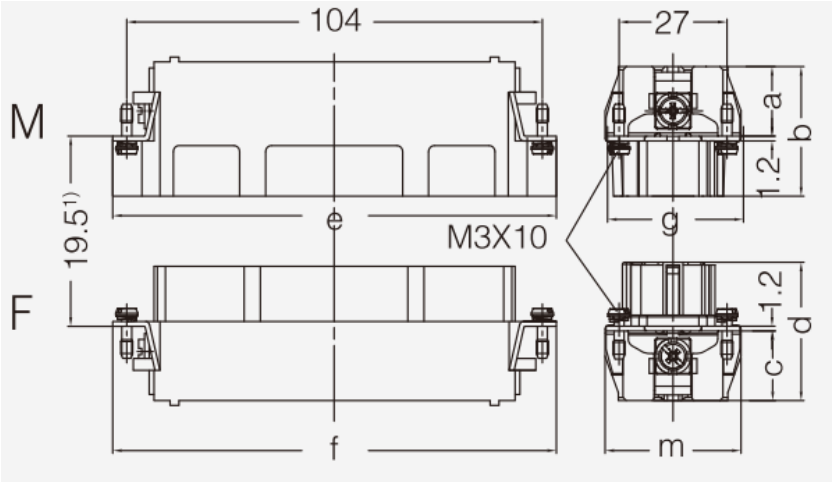
Certifications

UL- Certification, E-File-Number E75770

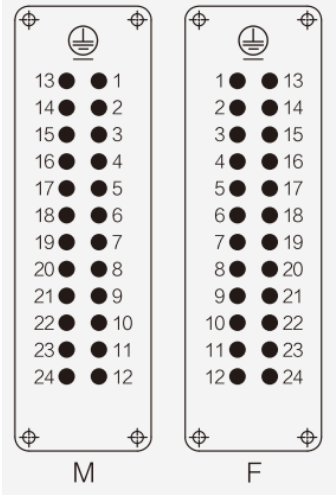
Standard

Safety Standard IEC 61984, IEC 60664-1
UL 1977
CSA 22.2 182.3

Technical Drawings



	a	b	e	g	c	d	f	m
[mm]	17	32,5	111	34	17	34,8	111,5	34



Pin assignment

381166832	DATA SHEET	
Valid from: 31.07.2025	EPIC® H-BE 024 FS	



Industrial machinery and plant engineering



Robust



Temperature-resistant

Info

Multifunctional insert for versatile applications
Screw, crimp, cage spring and Push-In version - freely combinable

Application range

Mechanical engineering
Light & sound technology
Plastics industry

Remark

Photographs are not to scale and do not represent detailed images of the respective products.

Creator: TODV1/BU EPIC Released: THBO1/BU EPIC	Document: DB381166832EN Version: 01	Page 3 of 3
---	--	-------------