
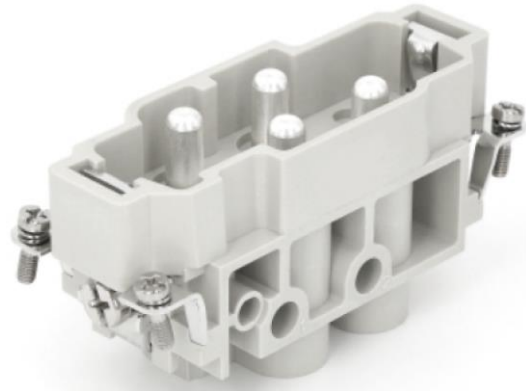


381166843	DATA SHEET	
Valid from: 25.06.2025	EPIC® H-K 004/0 MS	

Description

- Combination insert Power and Control
- High power in one connector insert
- Best in combination with ÖLFLEX® SERVO



Images may vary

General Characteristics

Series	H-K 4/0
Version	Male
Design Size	16B
Number of Contacts	4 + PE
Number of Power Contacts	4
Number of Signal Contacts	0
Termination Methods	Screw termination
Power Conductor Cross-Section	1.5 – 16 mm ² /AWG 16-6
Wire Protection	No
Temperature Range	-40°C up to +125°C

Mechanical Characteristics

Cycle of mechanical operation	≥ 500
Tightening torque contact screw	1,2 Nm @ 1,5 mm ² 2 Nm @ 2,5 mm ² 3 Nm @ 4, 6, 10, 16 mm ²
Stripping length power connection	14 mm


Electrical Characteristics

Rated Voltage Power, IEC	830 V
Rated Voltage Power, UL & CSA	600 V
Rated Impulse Power Voltage	8 kV
Rated Current, IEC	80 A
Rated Current, UL & CSA	80 A
Contact Resistance	≤ 0,3 mΩ
Pollution degree	3

Materials and Surfaces

Contacts	Copper alloy, hard-silver plated
Insulating Body	PC
Flammability Class according to UL 94	V-0

Creator: TODV1/BU EPIC	Document: DB381166843EN
Released: THBO1/BU EPIC	Version: 00

381166843	DATA SHEET	
Valid from: 25.06.2025	EPIC® H-K 004/0 MS	

Certifications

UL- Certification, E-File-Number

E75770

Standard

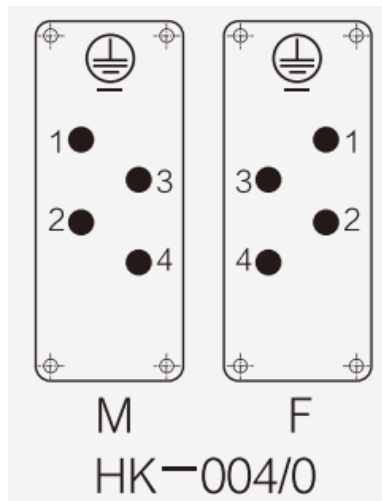
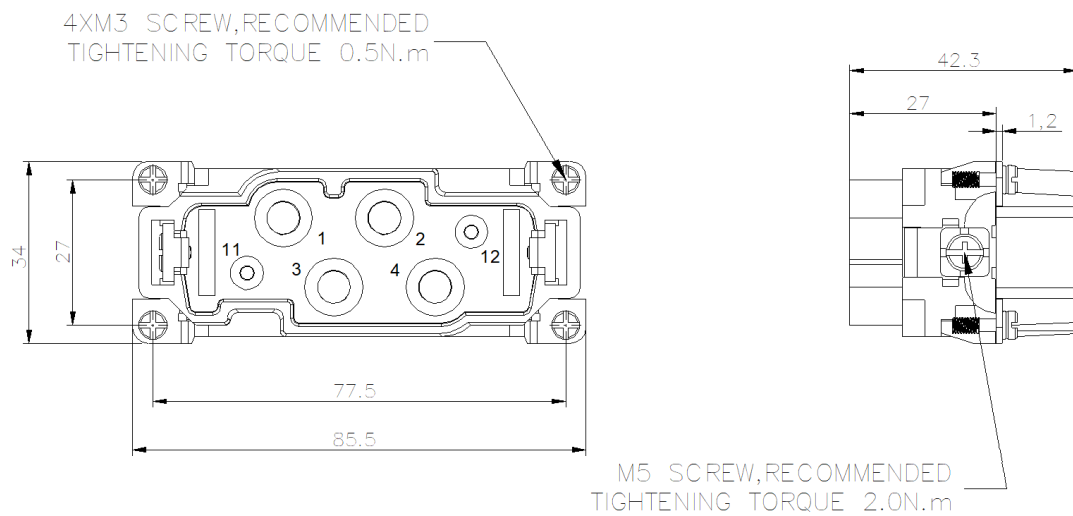
Safety Standard

IEC 61984, IEC 60664-1


UL 1977

CSA 22.2 182.3

Technical Drawings



Pin assignment

381166843	DATA SHEET	
Valid from: 25.06.2025	EPIC® H-K 004/0 MS	



Industrial machinery and plant engineering



Temperature-resistant



Wind Energy

Info

Combination Insert Power

Application range

Plant engineering
Renewable energy
Control engineering

Remark

Photographs are not to scale and do not represent detailed images of the respective products.

Creator: TODV1/BU EPIC Released: THBO1/BU EPIC	Document: DB381166843EN Version: 00	Page 3 of 3
---	--	-------------